

First Floor Opportunity
With Prominent Ground Floor
(suitable for various uses stp)

Entrance to the 1st floor

CHRIST'S LANE CAMBRIDGE



View from Christ's Pieces



Introducing Christ's Lane

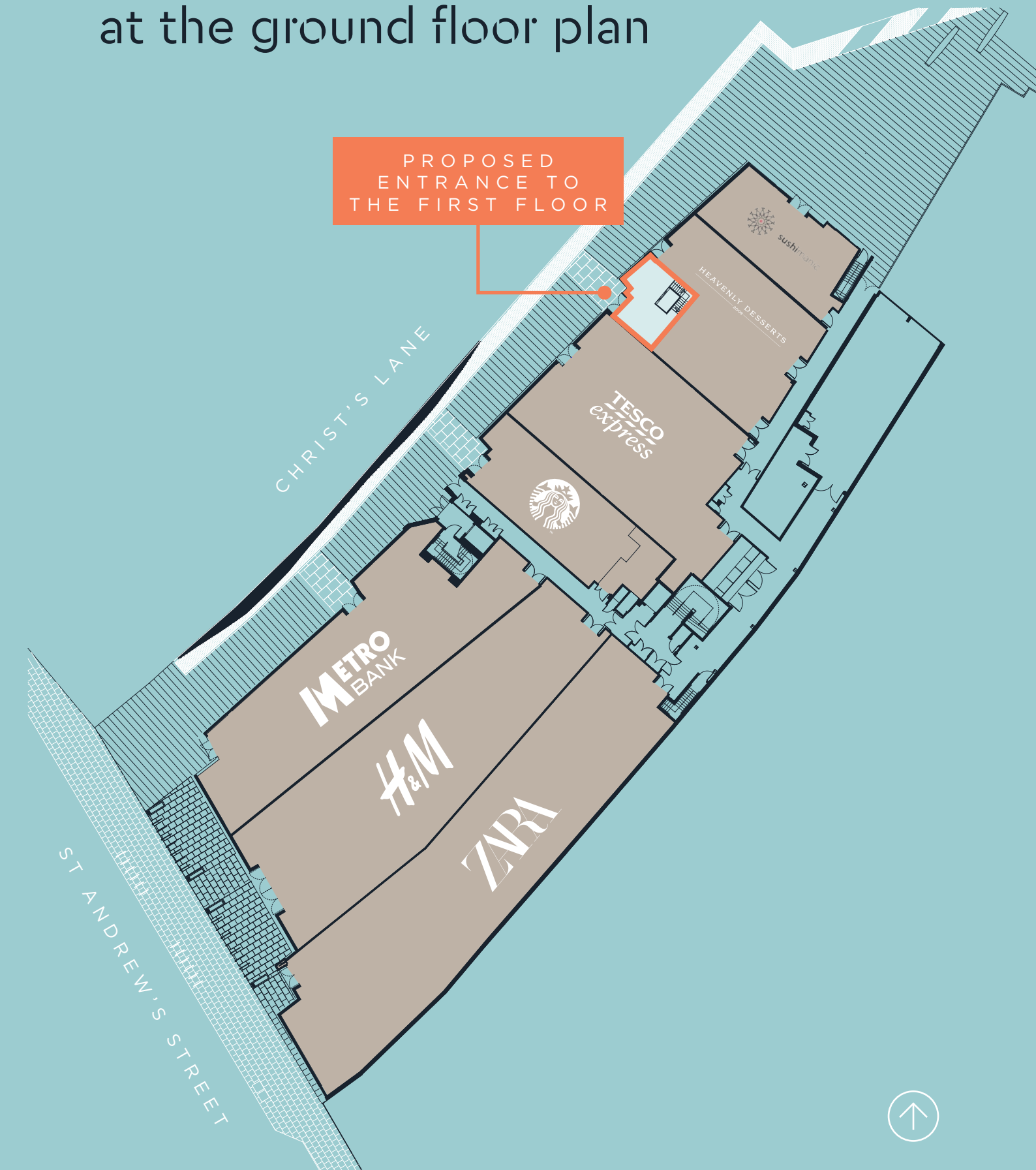
Christ's Lane, a distinctive retail-led area, situated in the high profile conservation area between Christ's College and Emmanuel College.

An amazing location right in the heart of Cambridge city centre, you're surrounded by excellent shopping facilities such as Zara, H&M and Metro Bank. The location is close to Grand Arcade and Lion Yard Centre with the busy Market Square just 5 minutes walk away.

Meet your neighbours. You'll be joined by amazing brands on Christ's Lane, with names such as Zara, Metro Bank, Starbucks and H&M.

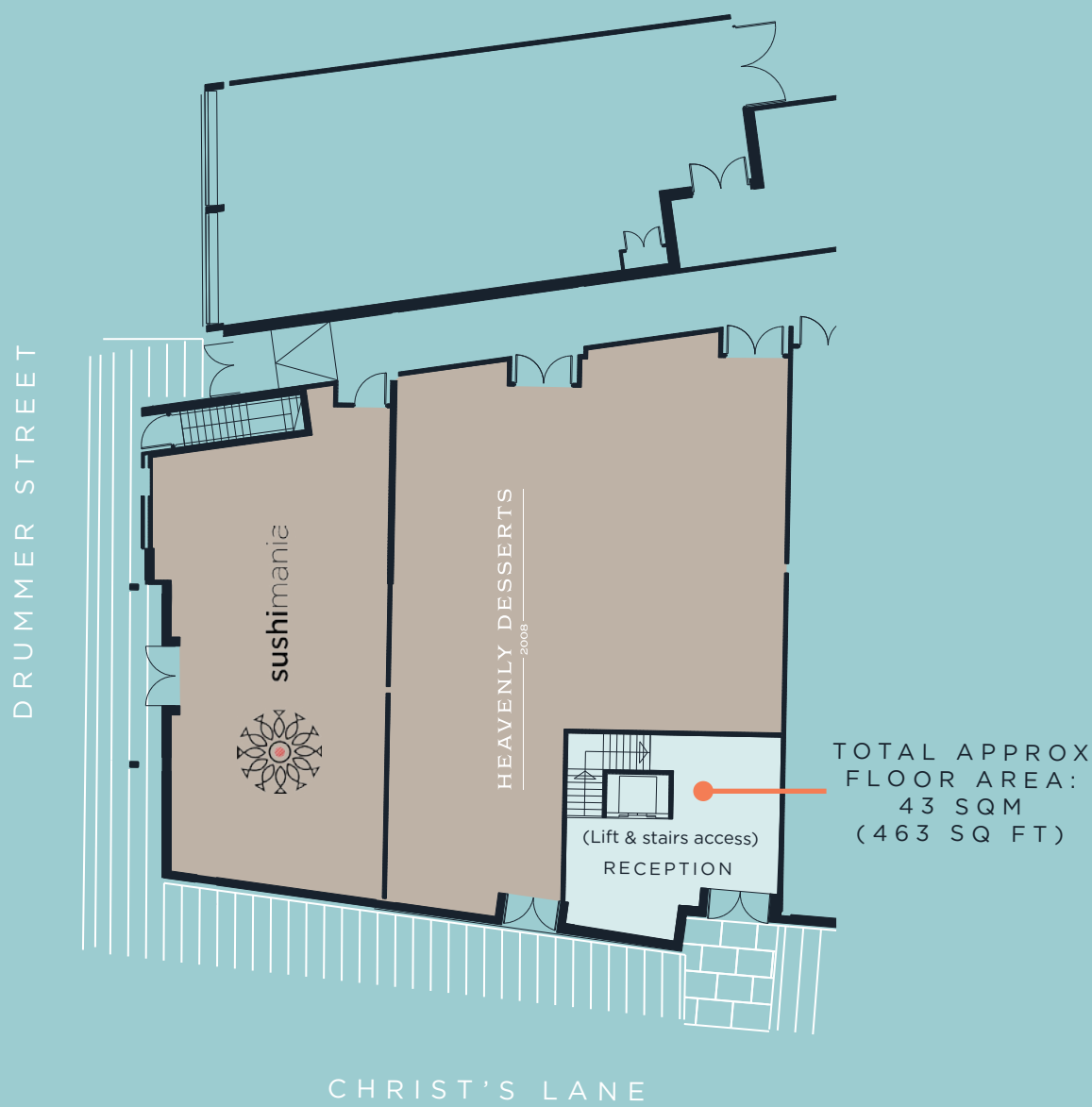
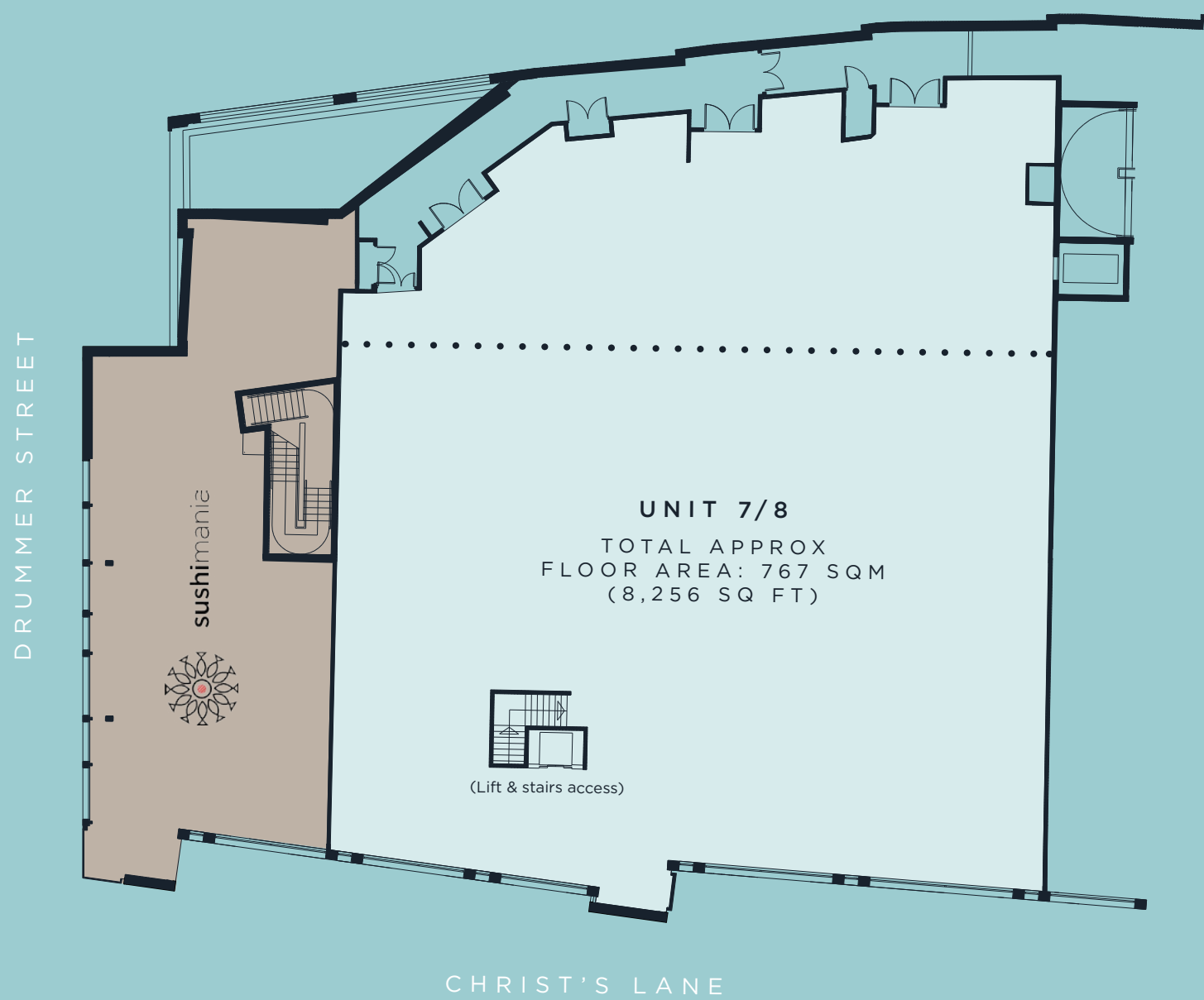


There's plenty to explore
on Christ's Lane, take a look
at the ground floor plan



First Floor Level

Ground Floor Entrance



Goad Plan

- Christ's Lane
- Access To First Floor Leisure
- First Floor Space





Carol Cooper
carol@fdarrah.co.uk
 T: 01603 666630
 M: 07900 606331



Nick Symons
nicksymons@mmxretail.co.uk
 T: 020 3130 4654
 M: 07977 998825

Francis Darrah Chartered Surveyors & MMX Retail copyright 2021. No warranty or representation, express or implied, is made to the accuracy or completeness of the information contained herein, and same is submitted subject to errors, omissions, change of price, rental or other conditions, withdrawal without notice, and to any special listing conditions imposed by the property owner(s). As applicable, we make no representation as to the condition of the property (or properties) in question. April 2022.